



AMERICAN
UNIVERSITY OF BEIRUT
MEDICAL CENTER

NAEF K. BASILE
CANCER INSTITUTE

Pioneering
Cancer Care

Table of contents

Message from the Director	3
History	4
Who we are?	4
Our Vision	4
Our Mission	5
Patient Care Statistics	6
Our Clinical Units	7
Ambulatory Treatment Unit (ATU)	
Outpatient Clinics	
Inpatient Unit (IU)	
Stem Cell Transplant Unit (SCT)	
Radiation Oncology Unit (RO)	
Our Collaborations Outreach Programs	10
National Collaborations	
Regional Collaborations	
International Collaborations	
Education	11
Conferences and Multidisciplinary Group Consultations	11
Team Members	12
Data Management and Clinical Research Unit	13
Our Programs	14
Social Work Services and Needy Patient Fund	15
Why Choose NKBCI?	16
Location and Appointment Scheduling	17



Message from the Director

Director of The Naef K. Basile Cancer Institute (NKBCI)

The Naef K. Basile Cancer Institute (NKBCI) at the American University of Beirut Medical Center (AUBMC) provides comprehensive cancer treatment and compassionate nursing care for adults. The institute has established a research network that includes basic, translational, clinical and population based research serving Lebanon and the Middle East Region.

The Institute's robust and integrated multidisciplinary programs encompass palliative and supportive care, radiation oncology pathology and laboratory services and a clinical research unit, offering cancer patients enhanced collaborative care. It engages in and endows community outreach initiatives to help raise awareness on cancer prevention, risk factors and the importance of early detection through educational campaigns with the aim to improve knowledge on the disease and its treatment outcomes.

The NKBCI is an exciting and growing institute with leading clinicians, educators, and scientists working together to improve patient care. Our faculty participates in a full-range of academic activities that includes basic science research, clinical research, and teaching. We aspire to be a reference in medical care leading innovation in the treatment of cancer in Lebanon and the region.

With multiple health care accreditations: JCI, MAGNET designations for Nursing services, CAP accreditation for our Pathology and Laboratory services, JACIE accreditation for our Bone Marrow Transplant Program, NKBCI institute offers a holistic medical care platform to ensure optimal patient outcomes and support throughout the recovery journey.

Ali Taher, MD, Ph.D., FRCP

IN YOUR FIGHT AGAINST CANCER, OUR DEDICATION WILL KEEP YOU STRONG.



History

The Naef K. Basile Cancer Institute (NKBCI) at the American University of Beirut Medical Center (AUBMC) became operational in 2007 upon receiving a generous contribution by the Naef K. Basile Foundation. The foundation was first established in 1995 following the death of Dr. Naef Basile, a Lebanese–American obstetrician–gynecologist whose lifelong wish was to give back to his country of birth through founding a cutting–edge cancer institute that would compare to the best cancer centers in the world.

Who we are?

The Naef K. Basile Cancer Institute (NKBCI) is a state–of–the–art adult cancer facility that provides comprehensive cancer prevention, diagnosis, and treatment, in addition to education and research.

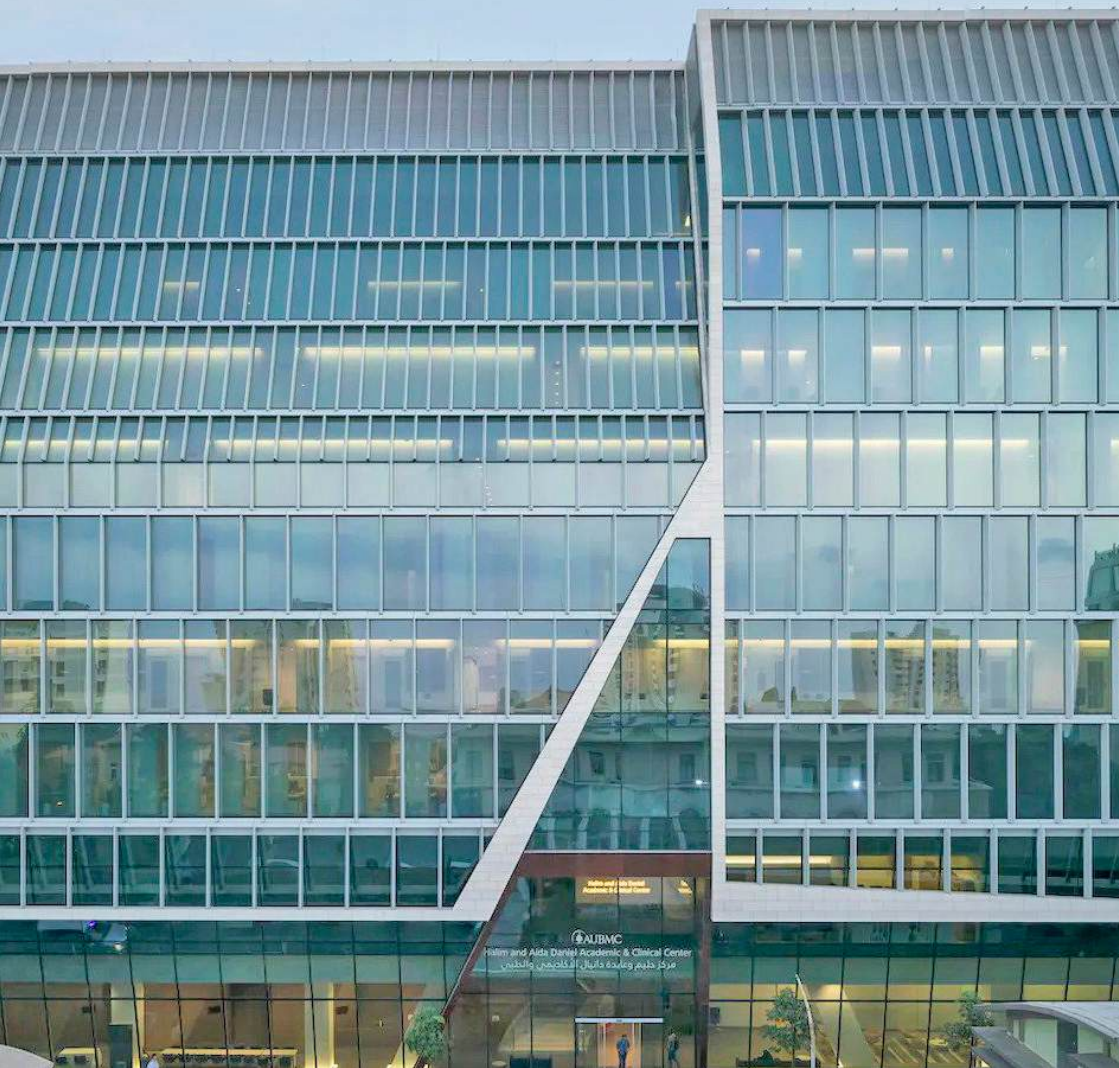
The NKBCI includes a multidisciplinary specialized group responsible for diagnosing and treating patients with cancer and establishing programs for health education related to cancer prevention and early diagnosis. Through its partnership with the Naef Basile Foundation, AUBMC has expanded and developed its oncology services to reach out to more patients in Lebanon and the region.

Our Vision

To be a leading institute for cancer prevention and treatment through promoting excellence in patient care, research, and education and enhancing effectiveness and collaboration among cancer programs and healthcare providers in Lebanon and the region.

Our Mission

The mission of the Naef K. Basile Cancer Institute (NKBCI) at the American University of Beirut Faculty of Medicine (AUBMC FM) is to reduce the burden of cancer in Lebanon and the region through the application of state-of-the-art medical knowledge and technology and the development of integrated and advanced programs in patient care, research, education and prevention.





PATIENT CARE STATISTICS

Average Annual Numbers

2,500

**New Cancer
Patients Enrolled**

16,500

**Hematology Oncology
Clinic Visits**

17,000

**Treatments
at the Ambulatory
Treatment Unit**

2,700

**Inpatient
Admissions**

100

**Stem Cell
Transplants**

15,951

**Radiation Therapy
Treatments**

995

**Patients Treated
at the Radiation
Therapy Unit**

1,961

**Radiation Oncology
Clinic Visits**

Our Clinical Units

NKBCI facilities have been originally set up to contain a spacious patient and family area that allows a friendly environment. Our commitment to patients goes beyond the delivery of sophisticated care; we respect the individual needs of all those who seek our care and work to empower patients with the knowledge and support they need to successfully fight cancer.

The Naef K. Basile Cancer Institute (NKBCI) at AUBMC serves as the Adult Hematology Oncology and Radiation Therapy Unit. NKBCI provides consultation services and care to patients with solid tumors, hematological malignancies and benign hematology diseases in Lebanon and the region.



Ambulatory Treatment Unit (ATU)

The outpatient facility, located on the fifth floors in ACC Building at AUBMC, can accommodate up to 43 outpatients concurrently allowing for significant increase in services in extended hours. Patients are admitted to the outpatient facility for chemotherapy, immunotherapy, physical examinations, procedures, IV antibiotics, blood transfusions, and blood studies. Procedures, such as bone marrow aspirates and biopsies, are performed in the outpatient unit under conscious sedation.

The average number of patients visiting the Ambulatory Treatment Unit per month is 1500 patients.

Outpatient Clinics

With more subspecialized faculty joining the Naef K. Basile Cancer Institute at AUBMC, the number of clinics has now grown to 11 in the aim to better respond to medical needs and improve patient experience at NKBCI, accounting for the urgency of cancer care. The flow of patients at the Daniel ACC follows a patient-centered model where all concerned health professionals are involved in care: Applying a one stop service setup to provide all needed services at the same point of care.



Inpatient Unit (IU)

The NKBCI inpatient facility is a multidisciplinary care unit located on the eighth floor of AUBMC including 32 patient beds. Patients are admitted to the inpatient facility for chemotherapy, procedures, investigation and management, and for treatment of underlying complications.

The average number of patients admitted in the inpatient unit per month is 228 with an average length of stay of 2.5 days.

Stem Cell Transplant Unit (SCT)

The NKBCI SCT Unit located on the eighth floor of AUBMC includes 8 positive pressures and High-Efficiency Particulate Air (HEPA) filtered rooms. Patients are admitted to the SCT Unit for stem cells transplantation, stem cells collection, and treatment of underlying complications post a transplant.

Providing the highest quality care standards, we have been able to cover for a continuously increasing number of stem cells transplants that has been observed across the past few years with the successful completion of more than 100 transplants per year.



Radiation Oncology Unit (RO)

The Radiotherapy Unit is located on the basement floor of AUBMC. It includes four examination rooms, two treatment areas, one simulation room, a dosimetry lab, a brachytherapy room, and one laboratory. It uses state-of-the-art equipment to provide treatment for an average of 995 patients per year. The unit is actively involved in multi-disciplinary cancer management and high-dose rate brachytherapy, Intensity Modulated Radiotherapy (IMRT), Image Guided Radiotherapy (IGRT), Stereotactic Radiosurgery (SRS), and Fractionated Stereotactic Radiotherapy (SRT). With all these services, the unit currently provides patients with excellent outcomes and reduced side effects.





Our Collaborations Outreach Programs

At the Naef K. Basile Cancer Institute, we have established national, regional, and international collaborations with sister institutions that enhance teaching, training, management of cases, and research activities. Current collaborations include:

National Collaborations

- Nabatieh Governmental University Hospital

Regional Collaborations

- King Hussein Cancer Center | Amman, Jordan

International Collaborations

- MD Anderson Cancer Center | Texas, USA
- Memorial Sloan Kettering Cancer Center | New York, USA
- Winship Cancer Institute-Emory University | Atlanta, USA
- Institut Curie | Paris, France



Education

The main objective behind the ACGME-Internationally accredited 4 year residency program at the Department of Radiation Oncology and the 3-year fellowship program at the Division of Hematology Oncology-Department of Internal Medicine at AUBMC is to train specialists to serve in the region and identify unique individuals with outstanding research potential for further training in the United States. NKBCI physicians are involved in training residents and fellows in both the Inpatient (including SCT Unit) and Outpatient Units.

CONFERENCES AND MULTIDISCIPLINARY GROUP CONSULTATIONS

10

Annual National Accredited Continuous Medical Education Activities

9

Multidisciplinary Weekly tumor boards

3

International Multidisciplinary Monthly meetings



Team Members

Naef K. Basile Cancer Institute includes more than 150 faculty and staff including Director, Chairman of the Department of Radiation Therapy, Head of the Hematology Oncology Division, physicians, as well as administrators, nurses and other related and allied healthcare workers.



Data Management and Clinical Research Unit

Initiated in 2013, the Data Management and Clinical Research Unit was established at the Naef K. Basile Cancer Institute, and it contained the previously established Tumor Registry (1970). Since the volume of patients treated and diagnosed with cancer over the past decade has been continuously increasing, founding this unit was essential for researchers to collaborate and combine basic, translational, and clinical research to explore ways to prevent, control, and treat cancer. Working hand in hand with a multidisciplinary team of health practitioners, nurses, doctors, and researchers, our aim is to support and improve cancer research, analysis, and data management.

The three components below complementarily aim at expanding research quality and management.

1. The AUBMC cancer registry is an information system designed for the collection, management and analysis of data on patients with diagnosis of a malignant or neoplastic disease (cancer). Cancer registration is a global method to report cancer incidence, the types of cancer that occur (site and morphology), and demographic information.
2. Data management plays a major role in collecting data on diagnostic findings, treatment, and follow up in the cancer database through the recently developed E-forms, adopted from the latest American Society of Clinical Oncology (ASCO) cancer-specific forms.
3. The clinical research unit manages current research and ongoing clinical trials.

NKBCI: A Clinical Research Hub

- 81 Clinical trials in total
- Top 2% rated Faculty
- Impact factor 11.4
- 34% of our articles are published in top 10% journals

Research Activity: Average Annual Numbers

- 90 Ongoing Studies
- 90 Publications in Recognized Journals
- Grants for Research Studies for More than 500,000 USD per year



Our Programs

Our services include but are not limited to the Oncology Program, Bone Marrow and Stem Cell Transplantation (Autologous and Allogeneic) Program, Research and Data Management, Educational Programs, Social Work Activities, Outreach Programs, and International Affiliations. Through its multidisciplinary team of physicians, nurses, administration and researchers, NKBCI attracts patients from Lebanon and the region who are seeking comprehensive care including but not limited to palliative and supportive care, psycho-oncology, cardio-oncology, neuro-oncology, onco-fertility, onco-sexuality, lymphatic drainage, genomics program, as well as others.

Psycho-Oncology

Helps patients with cancer and their families to better manage their disease and improve their quality of life throughout their cancer journey.

Cardio-Oncology

Provides comprehensive and coordinated care for patients with cancer who are at high risk of developing cardiac disorders.

Palliative Care

Specialized medical care for people with serious illness.

Neuro-Oncology

Provides multidisciplinary care to improve survival and quality of life for patients with brain and CNS tumors.

Onco-Fertility

Provides medical care solutions to infertility, a cancer survivorship issue associated with reduced quality of life, depression, and distress.

Onco-Sexology

Addresses sexuality and sexual health concerns of patients with cancer and their partners, improve their sexual health, clinical outcomes, and quality of life.

Benign Blood Clinic

Provides the required care for the diagnosis and management of patients with various benign hematological disorders.

Genomic Program

AUBMC is the first institution in the MENA region where Comprehensive Genomic counseling and Profiling is performed using the ROCHE AVENIO Tumor Tissue CGP kit.

Lymphatic Drainage

Complete Decongestive Therapies which includes Manual Lymphatic Drainage and other services to manage lymphatic disorders and successfully resolve them.

Social Work Services and Needy Patient Fund

Social work activities at NKBCI started with individual efforts from cancer survivors and family members of affected patients with cancer.

Several support groups to help other diagnosed patients to overcome the hurdles of their cancer recovery journey were created. Their aim was to inspire hope to those affected by cancer through early detection, education, and support services.

In 2018, NKBCI launched the Cancer Support Fund that aims to support underprivileged patients both on the financial and psychosocial levels to cater for the patient needs at the Center.



The Cancer Support Fund (CSF) is a charitable initiative established in 2018 at the American University of Beirut Medical Center's (AUBMC) Naef K. Basile Cancer Institute. The CSF was established in response to a pressing need in a region where cancer rates are on the rise and patients lack a comprehensive support system that will assist them throughout their medical treatment journeys.

The CSF is dedicated to raise public awareness of cancer while providing financial assistance, emotional support and guidance to underserved patients who need help. We aim to ensure providing our patients with the full range of support they need during their cancer journey and beyond. The CSF works on continually expanding its programs and services to meet the health care and social needs of the communities we serve.

Website: <https://csf-lebanon.org>

Giving page: <https://giving.aub.edu.lb/csf>





Why choose NKBCI?

The Naef K. Basile Cancer Institute (NKBCI) at the American University of Beirut Medical Center (AUBMC) is a Center of Excellence dedicated to the treatment of adult patients with cancer (over 2500 new patients per year).

NKBCI has a leading cancer center training Program with strong collaborations with regional and international institutions including King Hussein Cancer Center, MD Anderson Cancer Center, Memorial Sloan Kettering Cancer Center, and the Winship Cancer Institute. Our faculty are national, regional, and international leaders in clinical and translational research with ongoing clinical trials and more than 90 major publications annually.

It is the first in Lebanon to:

Develop subspecialized programs for the management of brain, breast, gastro intestinal, genitourinary, head and neck and lung cancers, in addition to lymphoma, hematological malignancies, bleeding and thrombotic disorders, and stem cell transplantation.

Have specialized oncology nurses, case managers, social workers and dedicated oncology pharmacists as part of the multi-disciplinary team. (AUBMC is the first healthcare facility with MAGNET designation in the Middle East Region).

Establish the Cancer Prevention and Control Program in Lebanon in addition to the Palliative Care Service as well as the Psycho Oncology, Neuro Oncology, Onco Sexuality, Onco Fertility, Genomics Program as well as others.

Perform the first unrelated donor stem cell transplant and over 100 stem cell transplants annually.

Perform the first radiofrequency (RF) ablation of a breast mass by the Radiation Therapy team.

Establish the first structured Data Management and Clinical Research Unit in Lebanon with a prospective database for several cancer disease sites.

Location and Appointment Scheduling

The Hematology Oncology Clinics and the Ambulatory Infusion center are located on the fifth floor of the ACC Building at AUBMC. The Radiation Oncology Clinics are located in the basement floor of AUBMC–Phase I. To schedule an appointment or contact us, you are kindly requested to refer to the numbers listed below.

Hematology Oncology Clinic

Clinic Appointments

Phone Number

961 1 37 43 74 ext. 7980

Direct Line

961 1 75 96 18

Fax

961 1 35 00 00 ext. 7942

Email

nkbci@aub.edu.lb

Radiation Oncology Unit

Clinic Appointments

Phone Number

961 1 37 43 74 ext. 5090/1

Direct Line

961 1 34 48 39

Fax

961 1 37 07 95



**COMPASSIONATE
CARE, INNOVATIVE
TREATMENT,
ENDLESS HOPE**



